

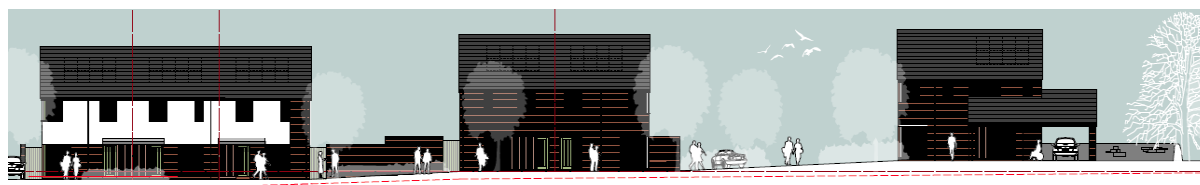
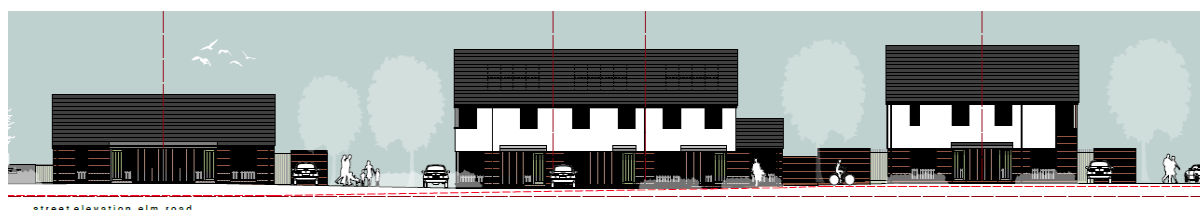
Longmeadow

Elm Road, Longmeadow Place &
Longmeadow House, Annan



A total of 27 units comprising of a mix of one-, two-, three- & four-bedroom homes, including amenity bungalows and a wheelchair-friendly house.

Seven of these will be built to PassivHaus Standard, with the others being Silver Standard Sustainable Buildings.



Contract value	£5.8M
Contract length	First 7 homes will be ready January 2022 with the others to follow late the same year
Housing mix	One-, two-, three- & four-bedroom homes, including a wheelchair-friendly house
Tenures	Scottish Secure Tenancy (Social Housing)
Partners	Ashleigh, McGowan Miller, Robert Potter & Partners, Ashers



For more information on the development, contact the team on 01387 321 300